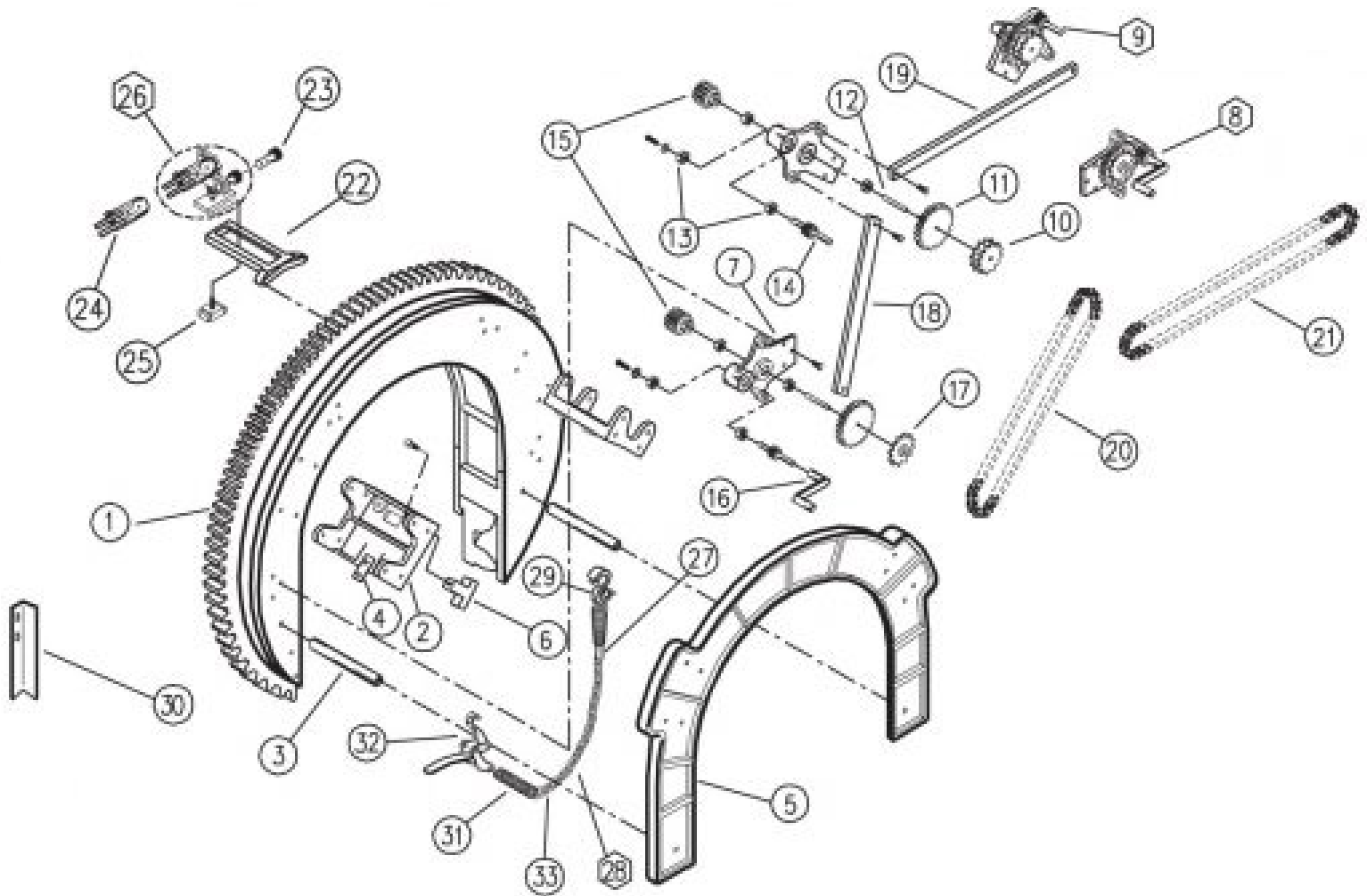


#5 Beveling Machine Parts List



No.	Part Name	Part No.	Qty.	No.	Part Name	Part No.	Qty.
1	Ring Gear Assembly	2A3&4-5	1	18	Side Tie Rod	29A-5	2
2	Saddle Arm	2F-5	1	19	Tie Rod	29-5	1
3	Saddle Spacer Stud	2E-5	4	20	Side Roller Chain	12B-5	2
4	Boomer Strap Eye	2D-5-6	2	21	Top Roller Chain	12A-5	1
5	Back Saddle Ring	2C-5	1	22	Torch Arm	1-R	1
6	Cuboid Space	13C-5	4	23	Knob & Cam Assembly	7F	1
7	Double Bearing Bracket	18-5-6	4	24	Torch Holder	7CS	1
8	Double Bearing Bracket Assembly (items 7, 11 to 17)	18AS-5-6	2	25	Base for 5C	6	1
9	Double Bearing Bracket Assembly (items 7, 10 to 16)	18AD-5-6	2	26	Torch Carrier Assembly	5C	1
10	Sprocket (Double)	12-4-6	2	27	Boomer Strap Snap	21	1
11	Crank Gear	10-5-6	4	28	Boomer Assembly (items 27, 29, 31, 32, 33)	30-5	1
12	Gear Axle	8A-4,5-6-8B-5-6	4	29	Boomer Hook	25	1
13	Bearing	26-4-6	16	30	Foot	16-5-6	2
14	Crank Pinion	8C-4,5-6	4	31	Boomer Spring	24-3-6	2
15	Pinion Gear	9-4-6	4	32	Boomer	27-1-6	1
16	Crank	8-3-6	2	33	Boomer Chain	20-5	1
17	Sprocket	14-4-6	2				